

Panel Listing

Providers can access their panel listing by logging in through the Anthem Medicaid Provider Self Service website or the Availity Web Portal.

From the Wisconsin Medicaid provider self-service website

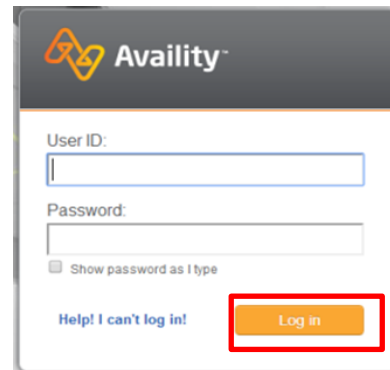
If you are navigating to the panel listing tool from www.anthem.com/wimedicaiddoc:

Click on Login and enter your Availity ID and password

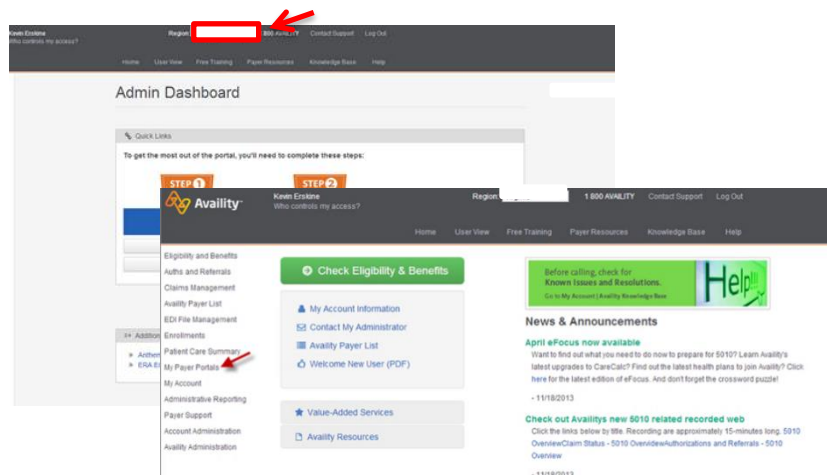
From the Availity website

If you are navigating to the panel listing tool from www.Availity.com:

Click Web Portal Users Login and enter your Availity ID and password



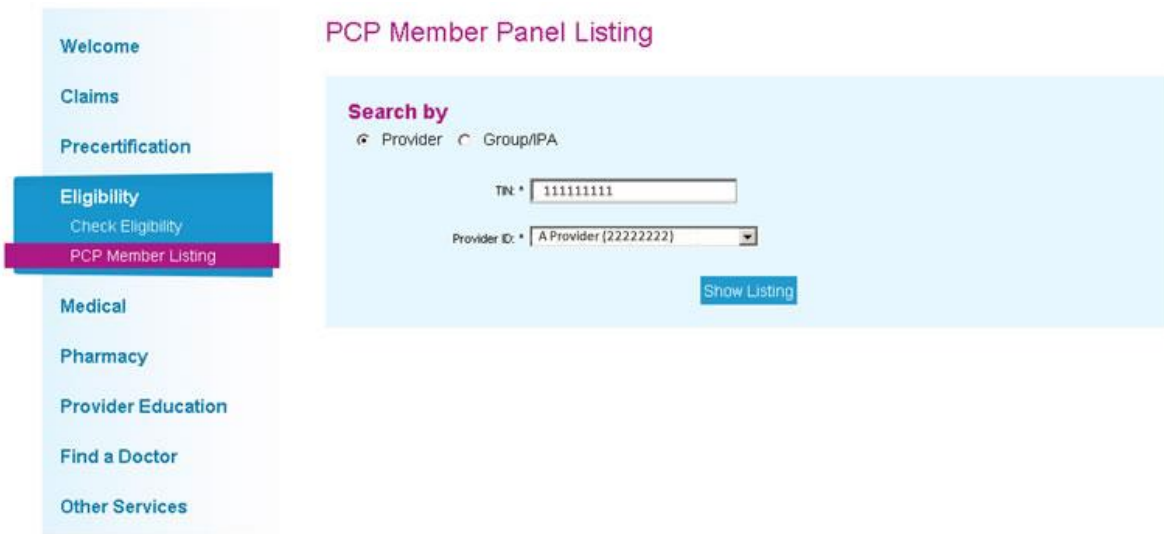
Select your state from the drop-down list in the top tool bar then select Amerigroup Provider Self-Service from the My Payer Portals in the left-hand navigation of either the Account Administrator or normal user screen



No actual user information is displayed in this guide. All names and IDs simulated.

The Wisconsin Medicaid provider self-service website gives you the ability to see your panel listing.

1. From the left hand menu, click **Eligibility**
2. Click **PCP Member Listing**
3. Select the tab you want for your search: **Provider** or **Group/IPA**
4. Use the drop-down menus to fill in the fields. If there is an asterisk (*), it is a required field for the search.
5. Click **Show Listing**

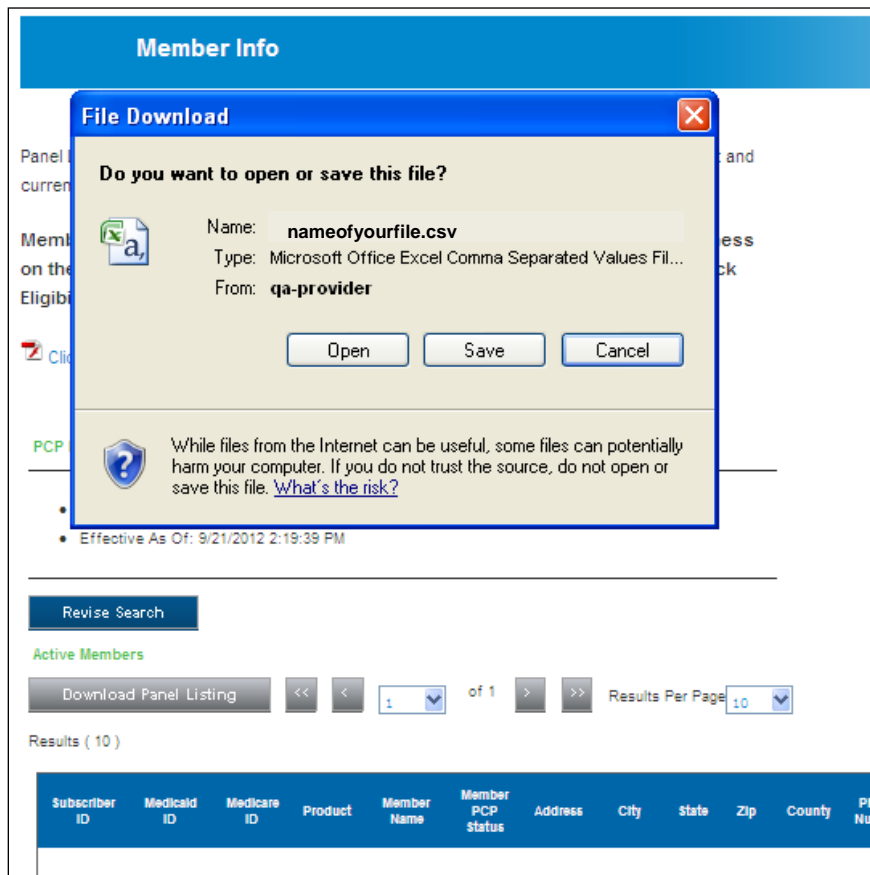


No actual user information is displayed in this guide. All names and IDs simulated.

In Eastern Wisconsin, Anthem Blue Cross and Blue Shield is the trade name of CompCare Health Services Insurance Corporation (for its insurance policies offered through the BadgerCare Plus program), an independent licensee of the Blue Cross and Blue Shield Association. ANTHEM is a registered trademark of Anthem Insurance Companies, Inc. The Blue Cross and Blue Shield names and symbols are registered marks of the Blue Cross and Blue Shield Association.

Download Your Panel List

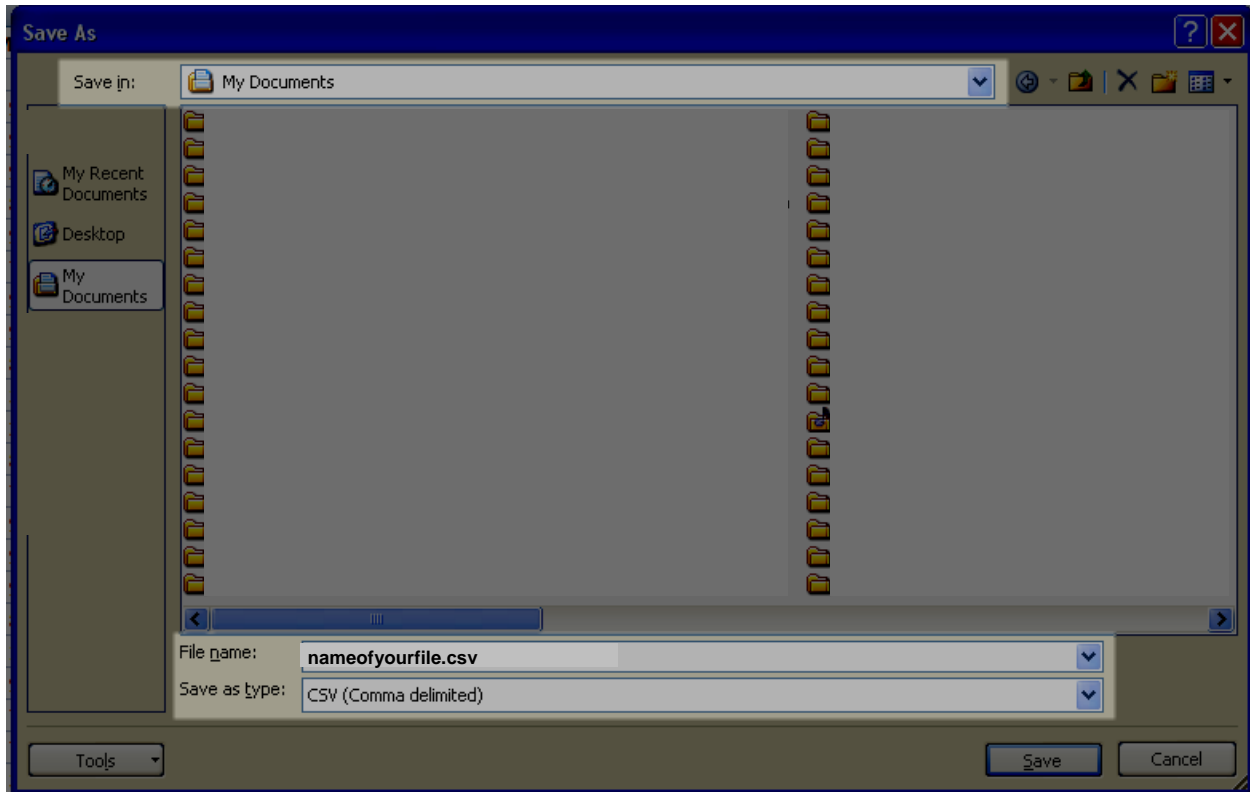
1. Click **Download Panel Listing**, located above your panel list on the screen. The **File Download** dialog box displays.



No actual user information is displayed in this guide. All names and IDs simulated.

In Eastern Wisconsin, Anthem Blue Cross and Blue Shield is the trade name of CompCare Health Services Insurance Corporation (for its insurance policies offered through the BadgerCare Plus program), an independent licensee of the Blue Cross and Blue Shield Association. ANTHEM is a registered trademark of Anthem Insurance Companies, Inc. The Blue Cross and Blue Shield names and symbols are registered marks of the Blue Cross and Blue Shield Association.
CWIPCE-0125-14 Updated 6/4/2014

2. Click **Save** to save the file to your computer.



3. Choose where you want the file to be saved in the **Save in:** drop-down menu.
4. **OPTIONAL:** Rename the file if you wish. The system automatically creates a file name using the date of the panel search, the provider’s name, and whether the panel is a list of active or inactive members.
5. **OPTIONAL:** Change the file type if necessary. The default file type is CSV.
6. Click **Save** to finish saving the document to your computer. ■

No actual user information is displayed in this guide. All names and IDs simulated.

In Eastern Wisconsin, Anthem Blue Cross and Blue Shield is the trade name of Compcare Health Services Insurance Corporation (for its insurance policies offered through the BadgerCare Plus program), an independent licensee of the Blue Cross and Blue Shield Association. ANTHEM is a registered trademark of Anthem Insurance Companies, Inc. The Blue Cross and Blue Shield names and symbols are registered marks of the Blue Cross and Blue Shield Association.
 CWIPEC-0125-14 Updated 6/4/2014